



February 2024

## **PRESIDENT'S MESSAGE**

Are you like us, shivering through another “frigid” San Diego winter? Have you had to break out your Ugg boots and puffy jacket to cover your T-shirt and shorts when you take a walk? This may be the time of year when we most realize that we live in a climate paradise. While others are shoveling snow, our gardening year is already in gear. I (Gail) am watching my narcissus and other bulbs poke through the earth, readying themselves to bloom! Some others may be harvesting your cool-season vegetables or just enjoying the sunshine.

And PLGC is starting to get ready for our annual Plant Sale on April 6! Melinda Medina and I (Audrey) are organizing activities. Watch for workshops to sign up for, requests for donations, and sign-ups for jobs before, during, and after the Sale. Like all our activities, the Plant Sale is only as good as the hard work of our members makes it!

On another note, we'd like you to know that the club has received several donations in memory of former member Diane Murdoch. We will be honoring her and her family at our March meeting. Our Sunshine Lady, Bev Bruff, is coordinating this event. More info to come.

We hope you stay warm this month. Maybe you'll even get a chance to use your fireplace, if you have one!

Gail Trimble and Audrey Clark  
Co-Presidents

**Never Stop Growing**

Point Loma Garden Club is affiliated with Pacific Region of National Gardens, Inc. and California Garden Clubs, Inc., Palomar District

## Finances and Philanthropy

Recently a member sent us several questions regarding PLGC finances and philanthropy. We thought their questions and our answers might interest other members as well. Please see a slightly edited version below.

### Questions:

1) Why do we have \$30,000 which sounds like a lot of money, in our checking account?

[Note: Gail erroneously stated \$20,000 during the January Meeting.]

2) Why does the board seem overly concerned about club finances?

3) What is PLGC doing for philanthropy?

### Answers:

1) Why do we have \$20,000, which sounds like a lot of money, in our checking account?

a. PLGC's checking account balance, just like yours, is a snapshot in time. The balance on any given day goes up and down. A high balance one day can go down rapidly when bills come due.

b. Any organization needs to have what is called "Working Capital," which is basically money on hand to pay upcoming expenses. Financial advisers for non-profits recommend that ideally, we should have up to two times our annual operating expenses in reserve. Our annual expenses this year are estimated to be around \$24,000, and we have about \$40,000 in total. So, we are within this range.

2) Why does the board seem overly concerned about club finances?

a. First, controlling the money is a major part of the Board's job. This includes the long-term financial health of the club. This is mostly accomplished by reviewing and approving the budget, but any time unbudgeted expenses are requested or incurred, we need to figure out how to handle them.

b. As of 2019, the club was running at a deficit, and had been for several years. It should be clear that this isn't a sustainable situation, and the issue was highlighted. Then the pandemic hit, the situation became worse, and finances became a major concern. While the club was not in any imminent danger, it could soon be if we didn't act to reduce spending and increase revenues. Based on the difficult discussions we had and decisions we made at that time, we have taken several measures to improve our financial health (e.g., increasing dues). These measures have been successful. We are now free to consider expanding programs and community service, rather than cutting them.

### 3) What is PLGC doing for Philanthropy?

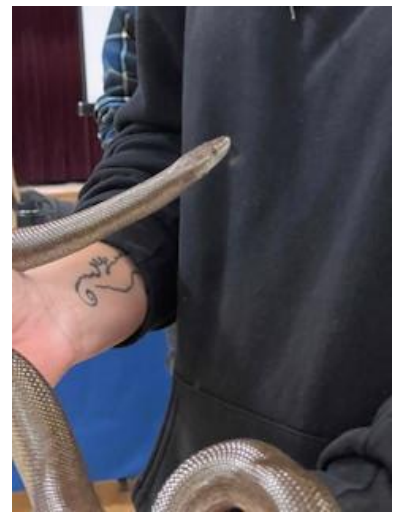
a. PLGC's core mission is, per our bylaws, the "friendly study of horticultural subjects." Community Service is specifically mentioned in our bylaws, but Philanthropy is not. Therefore, the Board has always treated Philanthropy as a secondary objective of the Club.

b. Per the budget, we are spending about \$1000 this year supporting school gardens and the seed library. We also provide additional community service (December Nights, Flower Show, Petal Pushers and Point Loma Lighthouse Garden) totaling about \$1700. All of this is mentioned in the Yearbook, and occasionally in the Newsletter. We will highlight this support more in the future in the spirit of greater transparency.

c. Proposals for Philanthropic and Community Service spending come from the relevant committee chairs. We encourage all members to submit ideas to the Chairs, or volunteer to be on the committees if you have ideas for them.

We hope this information is helpful to all our members. If you have any additional questions, please contact either of us.

Gail Trimble and Audrey Clark  
Co-Presidents, PLGC



The ladies from the Living Coast Discovery Center brought animals to share at our January meeting. They brought a local falcon and a local boa. It was a very interesting talk.

## WAYS AND MEANS

Our committee is currently preparing for the Annual Plant Sale that will be on Saturday, April 6th.

PLGC Members are participating in workshops for succulents and fresh vegetables and flowers. We need all of our members to consider various items that they may contribute to our Marketplace, items that we may also sell at the Plant Sale. They could include gently used items such as garden tools, garden gifts, or garden books, etc.

### **Garden Marketplace:**

We are having good success with our Marketplace at the back of the Portuguese Hall every month. Organizer Dan Dennison and assistants Laurie Roeder, Shyla Crowson, and Rebecca Long assist monthly to take in the donations that members offer, organize and quickly price for us! Thank you, volunteers! We have new requests for certain items; if you have them in your home: a sewing machine, garden books, and candles, gardening items.

### **Upcoming Events:**

**February 2:** We shall merge our Macrame and Crafts get together at the home of Susan Nance. We have the supplies for the macrame and an activity to create. Also, if you would like to come join us and bring your other crafts, such as knitting or crocheting to name a few. Bring your materials and join us. We can enjoy coffee, tea, and a shared snack or two.

**February 5:** Newer members and brainstorming Idea-makers: I am having a get-together at my home in order to come up with and discuss excellent ideas that we may make and create for the Ways and Means Committee for the Point Loma Garden Club. We can look at Pinterest and other sources for ideas that our members would like to create and then sell in the future. Please come by; please RSVP. My address is 3114 Dumas St.

**February 28:** Join us at the home of Hanna Richardson for our Fresh Plants Workshop. Bring a six pack or two of vegetables or fruit that we can plant so that they will be rooted by April 6th.

Melinda Medina- Ways and Means chairperson  
619-606-5103 or [mminthesky@icloud.com](mailto:mminthesky@icloud.com)

## MEMBERSHIP

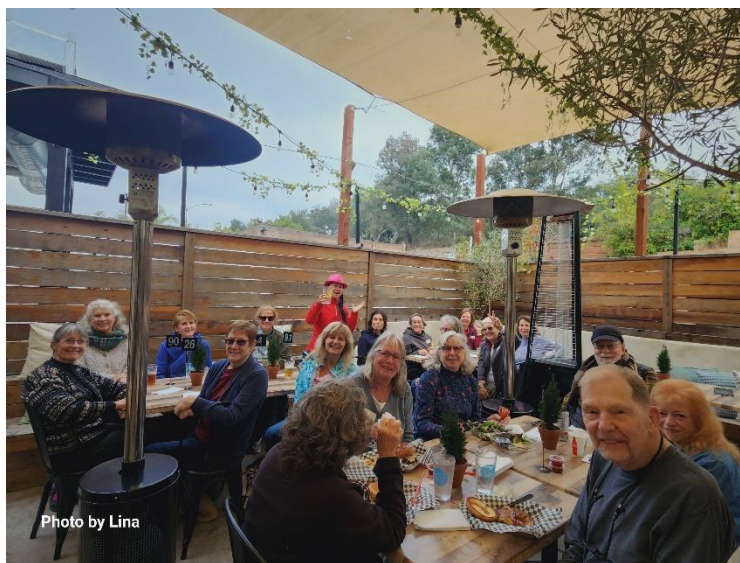


We have one new member this month to introduce and welcome to Point Loma Garden Club.

Welcome our newest member, Sandy Altshuler.

Sandy learned about our club through her neighbors, who are members. She is a third generation San Diegan and lived in Point Loma in her childhood. She moved back in 1997 and currently lives in Roseville with her husband. She has two adult children, Robbie, 39 and Alex, 32. She attended USC for a Fine Arts degree and Kansas University for an Art Education degree. She worked as a fine artist. She is retired but serves on the Board of Directors for her family's business. She has served the Museum of Photographic Arts as a trustee and the SDSU Arts Council as secretary. She is interested in orchids, bromeliads, flowering trees, and fruit trees, she collects seeds from successful specimens of plants in the area. She uses her camera to photograph light coming through plant tissues to capture color saturation, pattern, and composition. She is interested in Hospitality, Ways and Means, Outings and Petal Pushers. Welcome Sandy!

Her contact information is below:  
1275 Willow St., San Diego, Ca. 92106  
619-887-2683



The group enjoying lunch after the field trip.

## Sunshine Lady

This is a reminder that Bev Bruff is now the Sunshine Lady. Bev received sad news the month of December. Diane Murdoch passed away on Christmas day. She was a long-time member. Carol Grant's father also passed away on New Years Day. Get well to Christina Williams who has been under the weather. And Angela Geis will be having her mother move in with her so she can take care of her. Thinking of all of you and your families in these difficult times.

## POINT LOMA LIBRARY FLORAL DISPLAYS

Thank you to Dale Rekus, Gail Trimble, Sherry Hebert, Colleen Casey and Angela Geis for providing lovely floral arrangements at the Pt Loma Library during the month of January!

February 3	Gail Trimble	
February 10	Sherry Hebert	
February 17		
February 24	Jill West	

To fill the available slots you can email Barbara Thomas to volunteer or sign up at the next meeting - [Btcondor@yahoo.com](mailto:Btcondor@yahoo.com).

## San Diego Floral Association

We got this note card  
from the Floral  
Association for  
participating in December  
nights



Dear Gail, Debbie & Jean -  
Thanks so much for Point  
Loma Garden Club's ongoing  
support of the Festival of Trees  
Your contribution this year was  
so beautiful and well  
received by the visitors.  
We appreciate all you  
have done to support this  
event for many years.  
Happy Holidays.  
Jayne O'Brien  
President SDA

## **NEXT MEETING**

**WEDNESDAY, FEBRUARY 14<sup>TH</sup>**

**PORTUGUESE HALL**

**9:30 AM – NOON**

**Buffet Floral Arrangement** – Karen Worthington

**Hospitality** – Jeanne Irwin, Valerie Jenkins, Joanne Kemp, Rita Krieger, Jan Kugler, Lynn Langley, Laurie Lee, Ellen Liversidge, Roberta Lohla, Rebecca Long, Leanna Luna, Gaye Macy, Queen Lana Maples, Barbara Martin

**10 AM – General Meeting**

**5 Minute Presentation** – Valerie Jenkins – Ways to Identify Birds

**Program – Gardens in the Zoo**

The San Diego Zoo provides a variety of gardens representing different areas of the world. Among its greenhouses are the Orchid Greenhouse and Carnivorous Plant Greenhouse. Staff from the San Diego Zoo will describe the history of the Zoo's gardens, their design, and what goes on behind-the-scenes to care and maintain the gardens in the Zoo.

*Lecture and Animals!*



The group who went on the field trip to Desert Theater Nursery.



# HORTICULTURAL TABLE

hor·ti·cul·ture

[ˈhɔrdə,kəlCHər]

NOUN

## 1. the art or practice of garden cultivation and management

I've included the definition of Horticulture in our column this month. As you can see, Horticulture is both Art and Practice. We learn from books, we learn from each other, and we learn by practice. LOTS and LOTS of practice! This month, we enjoyed the fruits of YOUR practice...

**Jodie Bruhn** brought some beautiful veggies. I prefer meat and potatoes, but those veggies tempted me to consider a salad or stir-fry! See her turnip (Tokyo Cross) and variegated carrots in the photo below. Now, I know a thing or two about growing veggies, and those beautiful straight carrots got me to wondering about how Jodie got them so nice and straight. So, I asked her. Sure enough... Jodie gardens in raised beds. The depth of loose soil allows those carrots to grow straight down. Nice job, Jodie. By the way, she has 4 raised beds, each of them is 6'x6'. I wonder what else she has tucked into her beautiful soil...

**Sherry Hebert** brought a sweet echeveria in bloom. Now here's a tip. Sherry didn't know the name of her plant. And you know that we always label our display plants. But that didn't stop Sherryie, and it shouldn't stop you, either. We checked with the Master Gardener, and we asked around, and we figured out the scientific name for her plant, which is also known as Hens 'n Chicks. Thank you for your courage, Sherryie!

Next on our list is a Candy Corn Vine in bloom (aka Manetta Inflata), brought in by Jim Tullar. Jim, candy corn is popular in October! Aren't you a little late? (or 'way early!). Jim's Candy Corn Vine is pictured on the next page and is a good reminder to us all. You don't need a big specimen to impress us. A sweet snippet of anything in bloom will make us oooh and aaah. What little snippet can you bring to our February meeting??

**Shyla Crowson** brought in a single, perfect Camelia bloom. It showed a double row of white petals and a lush, golden central boss, and caught a lot of attention. Did you notice the "vase" in which it was displayed? It looked just like a camelia stem, and allowed the flower to have center stage. Shyla mentioned that these vases can be found via Amazon.

Last but certainly not least is **Jill West** and her “Mini Poinsettia”, pictured in a photo below. This diminutive plant caught many an eye, and a keen observer wondered if Jill has tried to propagate it. That would be an interesting experiment, Jill, and the Horticulture Table would certainly like to get a scoop on that story!

We’ll see you in February, with your snippets and produce, greenery and blooms. We can’t wait for you to show us what’s growing in *YOUR* garden!

Your Horticulture Table Duo,  
Renee Kuerbis & Pat Davis



Jodie and her veggies



Jill and her mini-poinsettia



Jim’s candy cane vine

**NEEDED:** YOUR empty pickle and relish jars with lids.

Please save your clean pickle and relish jars with lids, 9-12 oz size. Pat Davis will repurpose them as beautiful containers for blackberry jam to be sold at our next Holiday Bazaar. Any brand is acceptable. Leave your jars at the Horticulture Table each month.

Questions? Contact Pat at 360-790-3941 or [sssstr@comcast.net](mailto:sssstr@comcast.net)

## **FIELD TRIPS**

**Friday February 23**  
**Tour starts at 10:00 am**  
**Summers Past Farms**  
**15602 Olde Hwy 80**  
**Flinn Springs**  
**Summerspastfarms.com**

Join us as we get a behind the scenes tour of the beautiful and relaxing gardens of Summers Past Farms. The owners, Marshall and Sheryl, have turned their five acres into a delightful place to explore gardens and animals, have a cup of coffee at their coffee shop, shop for gifts in the post and timber barn and buy plants in the nursery. We might be able to purchase seeds for Sweet Peas to plant in our own gardens. You can also spend time in the fragrant herbal soap shoppe. It's filled with handmade herbal soaps, Lavender sprays and hand salves.

Throughout the year you can take your families and friends to many seasonal events, including Sweet Pea Day Celebration, Antique and Craft Fairs, Lavender Day Celebration and a Pumpkin Patch. Check out their website for the dates and times.

**Parking is limited, so carpooling is definitely recommended.**

We will stop for lunch after our visit at Grand Ole BBQ, just a few hundred yards from Summers Past Farms. Sorry vegetarians, this establishment serves mostly BBQ meats, though there are a few sides that might fill you up! Carpooling will meet at the parking lot by Seahive in Liberty Station. We should leave there at 9:15AM.

**Just a couple notes to make things easier for those of us who organize these trips.**

1. Sign up at the February meeting or on the PLGC website. If you sign up on the website, please leave your contact information. Events are for members only, so your information is private.
2. Please let us know if you can drive for the carpool and how many passengers you can take with you. This helps us organize rides and drivers more easily.

Sherry Hebert-Field Trip coordinator

## February Calendar

**February 7 9:30 am to noon** - Board Meeting - Home of Dale Rekus

**February 14, 9:30 am to noon** – General Meeting, Portuguese Hall.

**February 23,** Field Trip, Summers Past Farms

Maureen McGrath  
Newsletter Editor

Point Loma Garden Club  
P.O. Box 6382  
San Diego, Ca. 92166-0382

